

RICHARD MILLE FIFE REGATTA

06-12 June 2026
The Firth of Clyde and Loch Fyne, Scotland, UK

The Organising Authority (OA) is Largs Sailing Club (LSC) in conjunction with Fife Regatta Ltd.

SAILING INSTRUCTIONS

The notation '[NP]' in a rule means that a boat may not protest another boat for breaking that rule. This changes RRS 60.1(a).

1 RULES

- 1.1 The prescriptions of the RYA available at www.rya.org.uk will apply.
- 1.2 The World Sailing Offshore Special Regulations (OSR) available at www.sailing.org will apply.
- 1.3 The rules of the KLR Formula rating system will apply.
- 1.4 World Sailing Development rule DR21-01 applies:

The definition of Start is changed as follows:

Start A boat starts when her hull having been entirely on the pre-start side of the starting line, and having complied with rule 30.1 if it applies, any part of her hull crosses the starting line from the pre-start side to the course side either

- (a) at or after her starting signal, or
- (b) during the last 20 seconds before her starting signal.

RRS 29.1 does not apply. When a boat starts in accordance with item (b) of the definition Start she shall not return to the pre-start side of the line, and a starting penalty shall be applied to her elapsed time. The starting penalty shall be 3% of her elapsed time.

Any boat that crosses the starting line from the pre-start side between her preparatory signal and 20 seconds before her starting signal will be scored DNS. This changes RRS 29 and 63.1.

Any boat sailing through the starting line from the course side after her preparatory signal will be scored DSQ. This changes RRS 29 and 63.1.

2 CHANGES TO SAILING INSTRUCTIONS

Any change to the sailing instructions will be posted not less than one hour before the first start of the day it will take effect, except that any change to the schedule of races will be posted by 2000 on the day before it will take effect.

3 COMMUNICATIONS WITH COMPETITORS

- 3.1 The online official noticeboard is located at the event website <https://www.fiferegatta.com/official-noticeboard>
- 3.2 There will be no physical official notice board, however, hard copies of some documents (results for example) may be posted at each venue.
- 3.3 The race committee may make courtesy broadcasts to competitors by VHF radio on International Channel 72. If VHF Channel 72 becomes blocked or unusable Flag W will be displayed from the committee vessel and the broadcast communication channel will be changed to International Channel 77.

3.4 [DP] From the first warning signal until the end of the last race of the day, except in an emergency, a boat shall not make voice or data transmissions and shall not receive voice or data communication that is not available to all boats.

3.5 Skipper's race briefings will take place at the following times and locations:

Venue	Date and Race	Time	Location of Briefing
Largs	Sat 06 JUN 2026, Cumbræes Race Briefing	0830	Largs SC (Upstairs)
	Sun 07 JUN 2026, Rothesay Race Briefing	0830	
Rothesay	Mon 08 JUN 2026, Loch Fyne Race Briefing (Note: the race takes place the following day)	1800	Mount Stuart House
Portavadie	Thu 11 JUN 2026, Bute Race Briefing	0830	Marquee
Largs	Fri 12 JUN 2026, King's Course	0830	Largs SC (Upstairs)

3.6 The primary method of communicating racing information will be via the official noticeboard on the website, however WhatsApp may be used to provide additional information as well as to draw attention to racing related information posted on the notice board.

3.7 The OA may use WhatsApp to communicate with competitors and competitors can join the WhatsApp group at Registration

4 CODE OF CONDUCT

[DP] Competitors and support persons shall comply with reasonable requests from race officials.

5 SIGNALS MADE ASHORE

Signals Ashore will be made as follows:

Venue	Location
Largs	Largs SC balcony flagpole
Rothesay	Flagpole near the Rothesay Harbour Land Entrance Gate
Portavadie	Flagpole near the reception at Portavadie Marina

6 SCHEDULE OF RACES

Day/Date	Activity	No of Races	End of Day Berthing or Anchorage Location
Saturday 06 JUN 2026	Parade of Sail past the location of the Fife Boatyard in Fairlie		Largs Yacht Haven
	The Cumbræes Race	1	
Sunday 07 JUN 2026	The Rothesay Race	1	Rothesay
Monday 08 JUN 2026	Reserve Day	-	Rothesay
Tuesday 09 JUN 2026	Cruise to Kames via Kyles of Bute		Portavadie Marina
	The Loch Fyne Race*	1	
Wednesday 10 JUN 2026	Reserve Day	-	Portavadie Marina
Thursday 11 JUN 2026	The Bute Race	1	Largs Yacht Haven
Friday 12 JUN 2026	The Kings Course	1	Largs Yacht Haven

*Note Later start, see below.

6.1 The scheduled time of the warning signal for the first race of each day is 1025, except for the Loch Fyne race to Portavadie (Tuesday 09 June) when the scheduled time of the first warning signal is 1230. This changes the schedule published in the Notice of Race.

- 6.2 To alert boats that a race or sequence of races will begin soon, the orange starting line flag will be displayed with one sound at least five minutes before the first warning signal of the day is made.
- 6.3 On the last scheduled day of racing no warning signal will be made after 1400.

7 CLASS FLAGS

- 7.1 Class flags shall be supplied by the OA and are:

<i>Class</i>	<i>Flag</i>
Class 1	White with Black Fife Regatta Logo
Class 2	Black with White Fife Regatta Logo
Class 3	Blue with White Fife Regatta Logo

- 7.2 [DP][NP] Where possible competitors should display their class flag from their starboard shroud or backstay.

8 RACING AREAS

Please see the attached Appendices for details specific to each venue.

9 COURSES

Please see the attached Appendices for details specific to each venue.

10 MARKS

Please see the attached Appendices for details specific to each venue.

11 OBSTRUCTIONS

Please see the attached Appendices for details specific to each venue.

12 THE START

- 12.1 Races will be started using RRS 26 with the warning signal made 5 minutes before the starting signal.
- 12.2 The starting line is described in the attached Appendices.
- 12.3 [DP] [NP] When a yellow inflatable mark is laid near the committee boat approximately on the starting line, it is a starting limit mark that should be left on the same side as the nearby committee boat. Boats that pass between the yellow mark and the committee vessel may be subject to protest by the race committee.
- 12.4 See SI 1.4.
- 12.5 [DP][NP] Boats whose preparatory signal has not been made shall avoid the starting area.

13 CHANGE OF THE NEXT LEG OF THE COURSE – Not applicable at this event.

14 THE FINISH

The finishing line is described in the attached Appendices.

15 PENALTY SYSTEM

- 15.1 RRS 44.1, 44.2, 44.3 shall not apply. A boat that may have broken a rule of RRS Part 2 or RRS 31 may take a time penalty unless she has caused serious damage or injury, in which case she shall retire. The penalty shall be 3% of her elapsed time rounded up to the nearest second. A boat taking such a penalty shall inform the race committee as soon as possible after finishing racing for the day. This Changes RRS 44.

16 TIME LIMITS AND TARGET TIMES

The time limit shall be 1700 on each race day for all classes, Except for the race to Portavadie (Tuesday 09 June) when the time limit shall be 1800. Boats failing to finish within the time limit will be scored "Did Not Finish (DNF)". This changes RRS 35.

17 HEARING REQUESTS

- 17.1 The protest time limit for each Class is 90 minutes after the last boat in that class finishes the last race of the day or the race committee signals no more racing today, whichever is later. Competitors intending to protest should notify the Race Committee by VHF as soon as reasonably possible.
- 17.2 Notices will be posted no later than 120 minutes after the protest time limit to inform competitors of hearings in which they are parties or named as witnesses. Hearings may be held virtually; more information on the procedure is available on the Event Website.

18 SCORING

- 18.1 One race is required to be completed to constitute a series.
- a) When fewer than 4 races have been completed, a boat's series score will be the total of her race scores.
 - b) When 4 or more races have been completed, a boat's series score will be the total of her race scores excluding her worst score.
- 18.2 Results will be calculated using the KLR Formula rating system.

19 SAFETY REGULATIONS

- 19.1 [NP] [DP] Clydeport Operations Limited Restrictions.

NARROW CHANNELS. Attention is drawn to the International Regulations for the prevention of collisions at sea, 1972. Particular notice shall be taken of Rule 9b which states that "a vessel of less than 20m in length or a sailing vessel shall not impede the passage of a vessel which can safely navigate only within a narrow channel or fairway". Whilst racing or on a passage in the Firth of Clyde north of Cumbrae Head yachts must regard any such recommended channels as a "Narrow Channel" within the meaning of the IRPCS 9b.

Furthermore, Clydeport Operations Limited has decreed that any waters in the Firth of Clyde where vessels by virtue of their size, draught, speed or proximity to land, hazards and other vessels are unable to manoeuvre freely must be regarded as a "Narrow Channel". Whilst racing any yacht which is unable for reasons of lack of wind or other cause, to sail clear of a large power-driven vessel shall start her engine and/or paddle in order to clear and thereafter shall report full details to the Race Committee.

Competitors are reminded of the Clydeport Operations Limited Byelaw which prohibits yachts and other craft from manoeuvring within 100m of any ferry terminal. Particular regard should be paid to this when in the vicinity of the Caledonian Macbrayne facilities at Largs, Cumbrae, Wemyss Bay, Colintrave and Portavadie.

- 19.2 [NP] [DP] A boat that retires from a race shall notify the race committee at the first reasonable opportunity.

20 REPLACEMENT OF CREW OR EQUIPMENT

Substitution of the registered person in charge during the series is not permitted without prior written approval of the Race Committee.

21 EQUIPMENT AND MEASUREMENT CHECKS

- 21.1 A boat or equipment may be inspected at any time for compliance with the class rules, notice of race and sailing instructions. The fact that race officials may conduct inspections of a boat does not reduce the responsibilities of each competitor set out in the notice of race.
- 21.2 [DP] When instructed by a race official on the water, a boat shall proceed to a designated area for inspection.

22 SUPPLIED BOATS – Not applicable at this event.

23 OFFICIAL VESSELS

Official Committee Vessels shall be marked with a Yellow official Fife Regatta flag.

24 SUPPORT TEAMS

[DP] [NP] Support boats shall be registered with the OA.

25 TRASH DISPOSAL

Trash shall be disposed of in the appropriate places when ashore.

26 BERTHING

[DP] Boats shall be kept in their assigned places in the harbour.

27 HAUL OUT RESTRICTIONS

[DP] Boats shall not be hauled out during the event except with and according to the terms of prior written permission of the race committee.

28 DIVING EQUIPMENT AND PLASTIC POOLS

[DP] Underwater breathing apparatus, face masks, snorkels and plastic pools or their equivalent shall not be used around keelboats between the preparatory signal of the first race and the end of the Event except with the prior written approval of the race committee.

29 PRIZES

Prizes will be awarded at the discretion of Fife Regatta Ltd.

30 RISK STATEMENT

- 30.1 Rule 3 of the Racing Rules of Sailing states: "The responsibility for a boat's decision to participate in a race or to continue racing is hers alone".

Sailing is by its nature an unpredictable sport and therefore inherently involves an element of risk. By taking part in the event, each competitor agrees and acknowledges that:

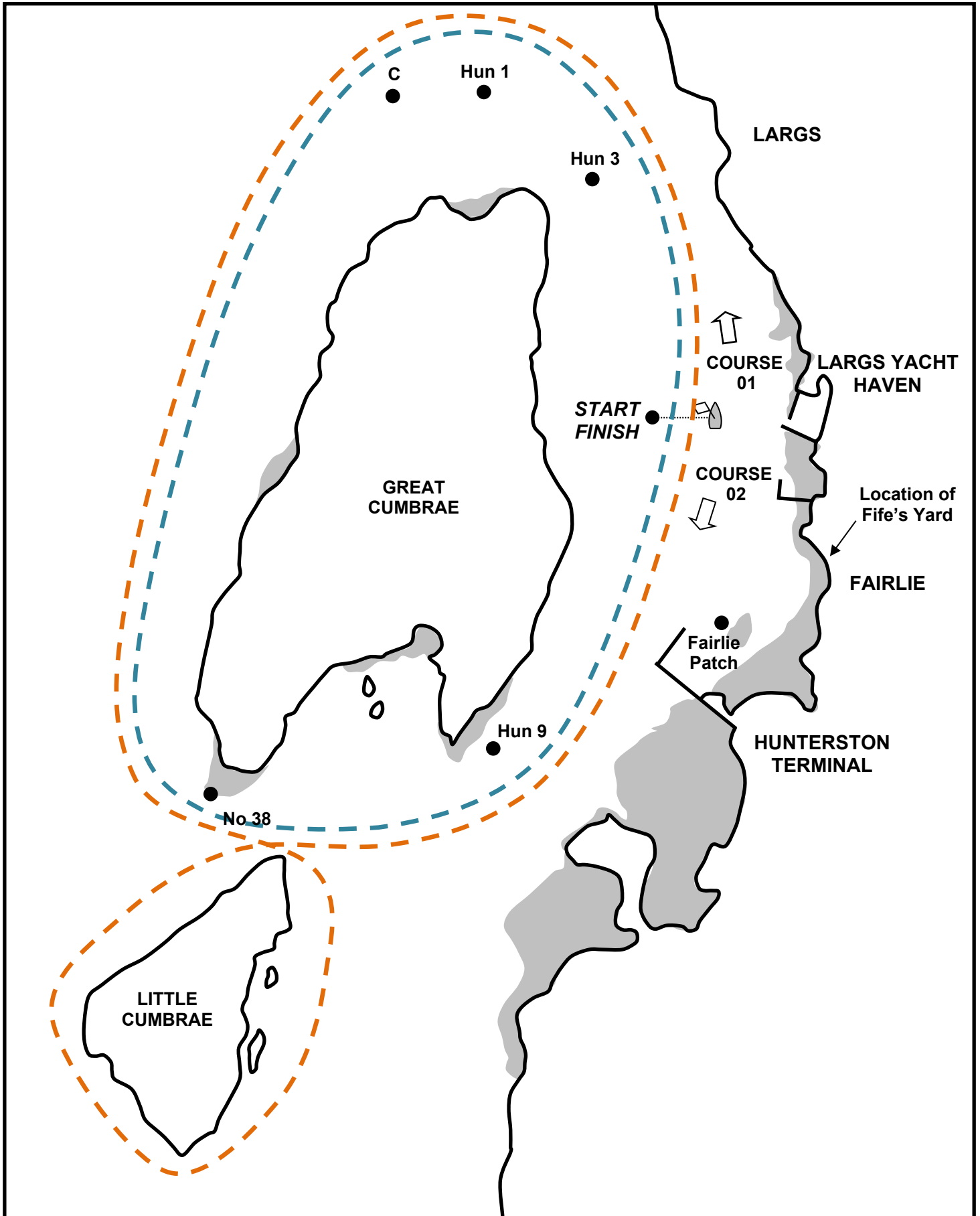
- a) They are aware of the inherent element of risk involved in the sport and accept responsibility for the exposure of themselves, their crew and their boat to such inherent risk whilst taking part in the event;
- b) They are responsible for the safety of themselves, their crew, their boat and their other property whether afloat or ashore;
- c) They accept responsibility for any injury, damage or loss to the extent caused by their own actions or omissions;
- d) Their boat is in good order, equipped to sail in the event and they are fit to participate;
- e) The provision of a race management team, patrol boats and other officials and volunteers by the event organiser does not relieve them of their own responsibilities;

- f) The provision of patrol boat cover is limited to such assistance, particularly in extreme weather conditions, as can be practically provided in the circumstances;
- g) It is their responsibility to familiarise themselves with any risks specific to this venue or this event drawn to their attention in any rules and information produced for the venue or event and to attend any safety briefing held for the event.

31 INSURANCE

Each participating boat shall be insured with valid third-party liability insurance with a minimum cover of £3,000,000 per incident or the equivalent.

Appendix A - THE CUMBRAE RACE



*Diagrams are not to scale and should not be used for navigation.
See Admiralty Chart SC2131 for more accurate information*

A1. THE START

A1.1 The starting line shall be between the mast displaying an orange flag on the committee vessel, anchored near Largs Yacht Haven, and an orange inflatable race mark.

A2. THE COURSE

A2.1 The course to be sailed shall be indicated by a yellow number on a black background displayed on the committee vessel.

A2.2 COURSE 01.

CLASSES 1 and 2 ONLY	
A figure of eight around Great and Little Cumbrae Islands – North About (approx. 15.5nm)	
Mark	Direction
Start/Finish Line	Cross South to North
“Hun3” Nav Buoy (red)	Pass to PORT
“Hun1” Nav Buoy (yellow)	Pass to PORT
“C” Nav Buoy (green)	Pass to PORT
“No 38” South Cardinal Buoy	Pass to PORT
Little Cumbrae Island (<i>rounding mark</i>)	Pass to STARBOARD
“Hun 9” Nav Buoy (red)	Pass to PORT
Start/Finish Line	Cross South to North

CLASS 3 ONLY	
A single lap around Great Cumbrae Island – North About (approx. 11nm)	
Mark	Direction
Start/Finish Line	Cross South to North
“Hun3” Nav Buoy (red)	Pass to PORT
“Hun1” Nav Buoy (yellow)	Pass to PORT
“C” Nav Buoy (green)	Pass to PORT
“No 38” South Cardinal Buoy	Pass to PORT
“Hun 9” Nav Buoy (red)	Pass to PORT
Start/Finish Line	Cross South to North

A2.3 COURSE 02.

CLASSES 1 and 2 ONLY	
A figure of eight around Great and Little Cumbrae Islands – South About (approx. 15.5nm)	
Mark	Direction
Start/Finish Line	Cross North to South
“Hun 9” Nav Buoy (red)	Pass to STARBOARD
Little Cumbrae Island (<i>rounding mark</i>)	Pass to PORT
“No 38” South Cardinal Buoy	Pass to STARBOARD
“C” Nav Buoy (green)	Pass to STARBOARD
“Hun1” Nav Buoy (yellow)	Pass to STARBOARD
“Hun3” Nav Buoy (red)	Pass to STARBOARD
Start/Finish Line	Cross North to South

CLASS 3 ONLY	
A single lap around Great Cumbrae Island – South About (approx. 11nm)	
Mark	Direction
Start/Finish Line	Cross North to South
“Hun 9” Nav Buoy (red)	Pass to STARBOARD
“No 38” South Cardinal Buoy	Pass to STARBOARD
“C” Nav Buoy (green)	Pass to STARBOARD
“Hun1” Nav Buoy (yellow)	Pass to STARBOARD
“Hun3” Nav Buoy (red)	Pass to STARBOARD
Start/Finish Line	Cross North to South

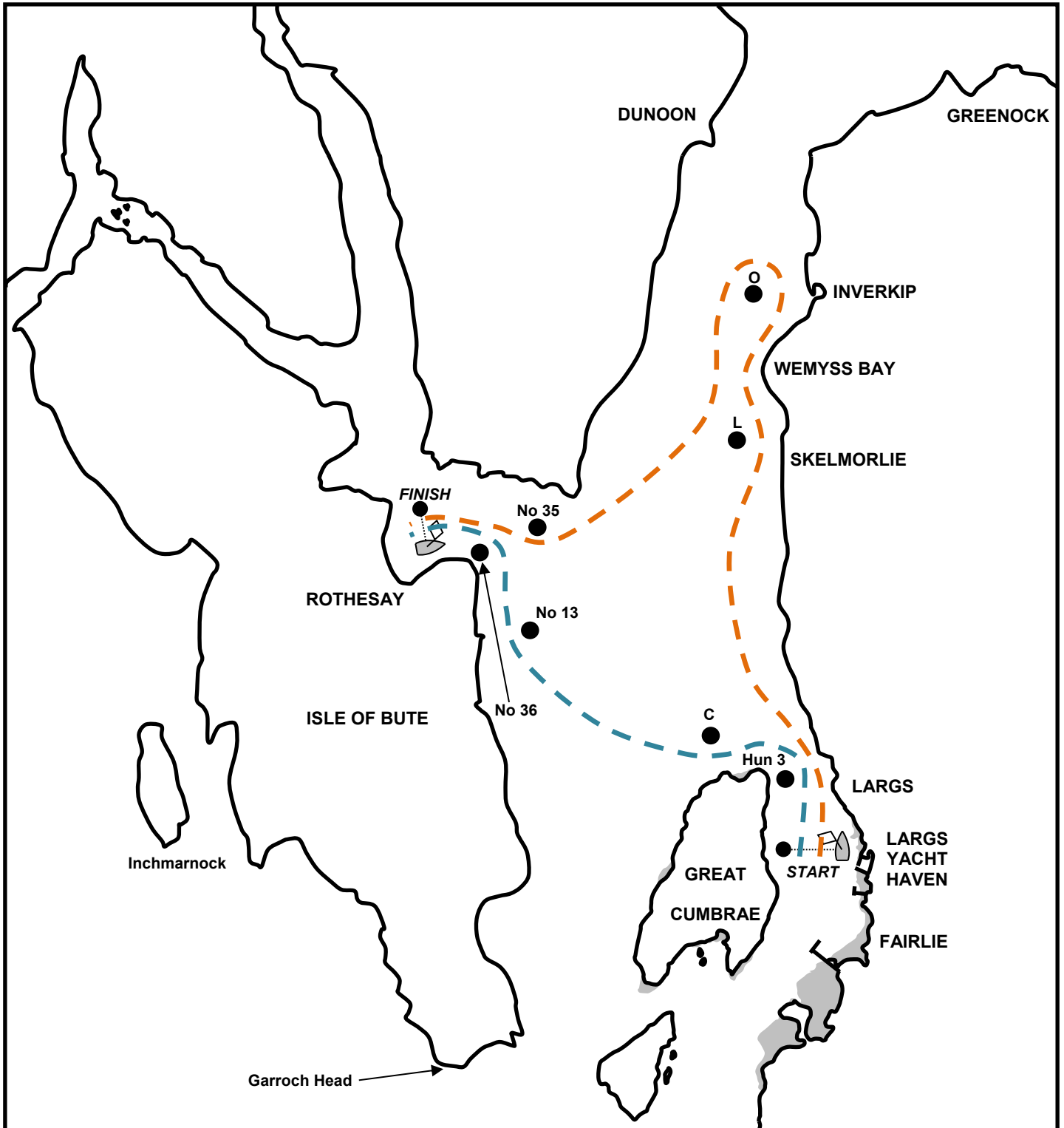
A3. THE FINISH

- A3.1 The finishing line shall be between the mast displaying a blue flag on the committee vessel and an orange inflatable race mark.
- A3.2 Lap times shall be recorded and may be used to calculate results in the event of boats not completing the full course.
- A3.3 **SHORTENED COURSE:** The course may be shortened at any mark of the course in accordance with RRS 32.2 or, in addition, at an inflatable buoy (that is not necessarily a pre-defined mark of the course) laid specifically for shortening the course. In the event of a shortened course boats shall finish between a committee vessel displaying flag "S" and the adjacent mark.

INSTRUCTIONS FOR THE PARADE OF SAIL PAST THE LOCATION OF THE FIFE BOATYARD IN FAIRLIE

Boats should gather **to the west of** the "Fairlie Patch" Green Channel Marker (55°45.4N, 04°52.3W), beware of shallow water to the East of the mark. At 0915 please sail towards the former location of Fife's Yard (now occupied by a row of coloured houses) passing as close as possible to the location of the yard. Then proceed to the starting area for the Cumbraes Race.

Appendix B - THE ROTHESAY RACE



*Diagrams are not to scale and should not be used for navigation.
See Admiralty Chart SC2131 for more accurate information*

B1. THE START

- B1.1 The starting line will be between a staff displaying an orange flag on the committee vessel, anchored off Largs Yacht Haven, and an orange inflatable mark towards the Great Cumbrae Shore.

B2. THE COURSE

- B2.1 **CLASS 1 and CLASS 2 only:** Largs to Rothesay via Inverkip (approx. 15.5nm)

<i>Mark</i>	<i>Direction</i>
Start	Cross South to North
"Hun 3" Navigation Buoy (red)	Pass to PORT
"L" Navigation Buoy (red)	Pass to PORT
"O" Navigation Buoy (green)	Pass to PORT
"No 35" Navigation Buoy (green)	Pass to STARBOARD
Finish	Cross East to West

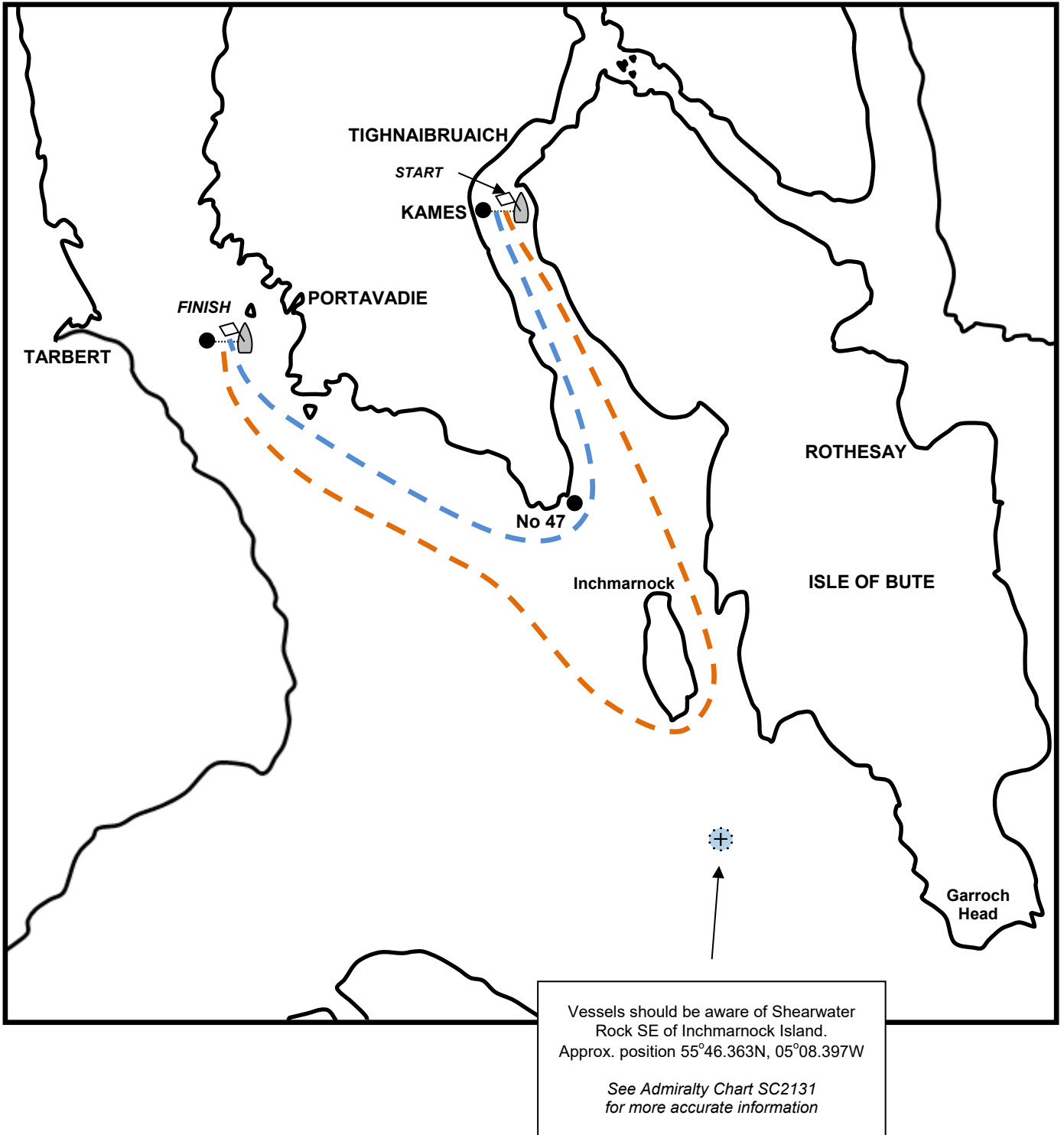
- B2.2 **CLASS 3 only:** Largs to Rothesay (approx. 8nm)

<i>Mark</i>	<i>Direction</i>
Start	Cross South to North
"Hun 3" Navigation Buoy (red)	Pass to PORT
"C" Navigation Buoy (green)	Pass to STARBOARD
"No 13" Isolated Danger Beacon	Pass to STARBOARD
"No 36" Navigation Buoy (red)	Pass to PORT
Finish	Cross East to West

B3. THE FINISH

- B3.1 The finishing line shall be between the mast displaying a blue flag on the committee vessel and a blue inflatable race mark.
- B3.2 **SHORTENED COURSE:** The course may be shortened at any mark of the course in accordance with RRS 32.2 or, in addition, at an inflatable buoy (that is not necessarily a pre-defined mark of the course) laid specifically for shortening the course. In the event of a shortened course boats shall finish between a committee vessel displaying flag "S" and the adjacent mark.

Appendix C - THE KYLES RACE



*Diagrams are not to scale and should not be used for navigation.
See Admiralty Chart SC2131 for more accurate information*

C1. THE START

C1.1 The starting line will be between the mast displaying an orange flag on the committee vessel, anchored off Kames, and an orange inflatable mark.

C2. THE COURSE

C2.1 **CLASS 1 and CLASS 2 only:** Kames to Portavadie via Inchmarnock (approx. 17nm)

<i>Mark</i>	<i>Direction</i>
Start	Cross North to South
Inchmarnock Island	Pass to STARBOARD
Finish	Cross South to North

C2.2 **CLASS 3 only:** Kames to Portavadie (approx. 11nm)

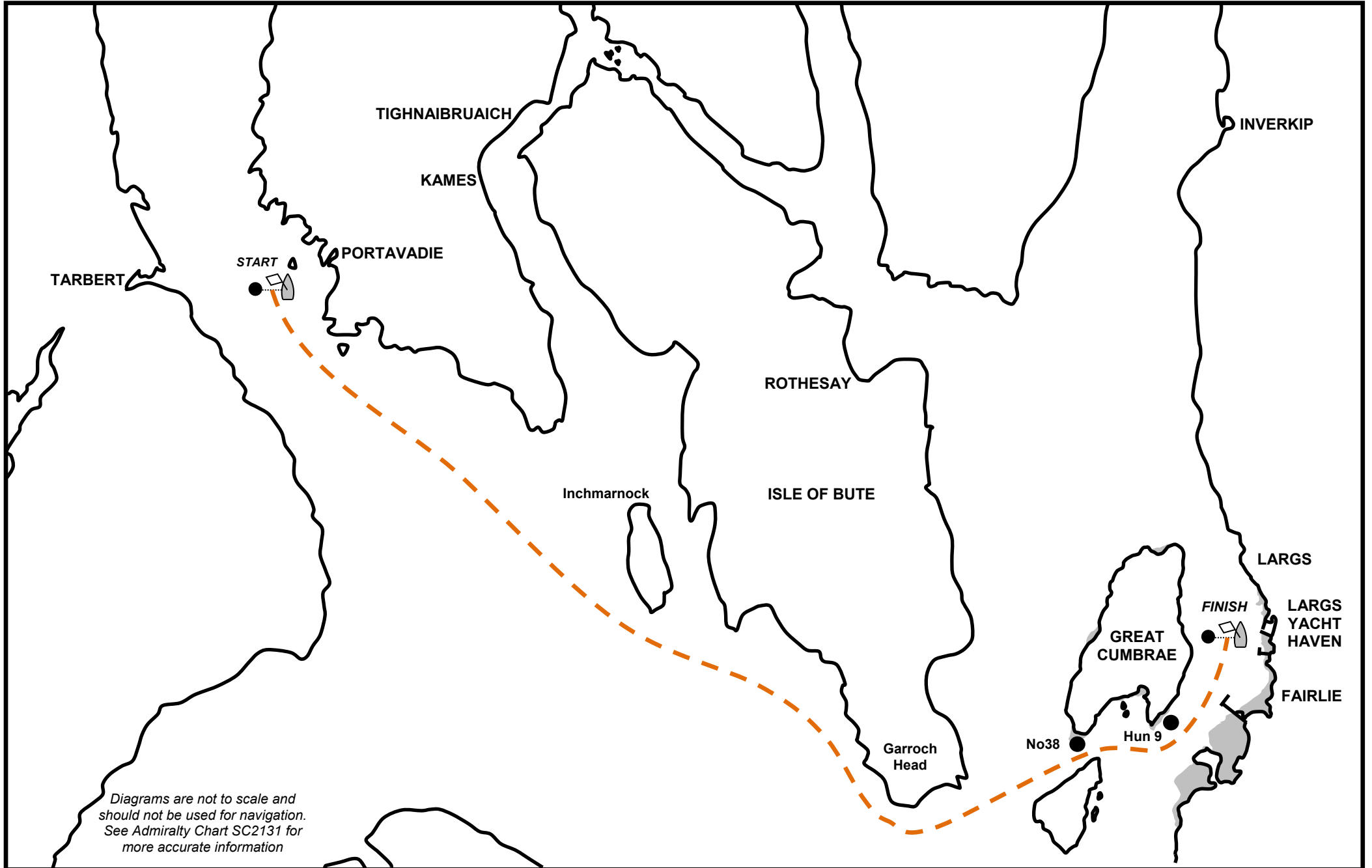
<i>Mark</i>	<i>Direction</i>
Start	Cross North to South
No 47 Navigation Buoy (red)	Pass to STARBOARD
Finish	Cross South to North

C3. THE FINISH

C3.1 The finishing line shall be between the mast displaying a blue flag on the committee vessel and a blue inflatable race mark.

C3.2 **SHORTENED COURSE:** The course may be shortened at any mark of the course in accordance with RRS 32.2 or, in addition, at an inflatable buoy (that is not necessarily a pre-defined mark of the course) laid specifically for shortening the course. In the event of a shortened course boats shall finish between a committee vessel displaying flag "S" and the adjacent mark.

Appendix D - THE BUTE RACE



D1. THE START

D1.1 The starting line will be between the mast displaying an orange flag on the committee vessel, anchored between Tarbert and Portavadie Marina, and an orange inflatable mark.

D2. THE COURSE. Portavadie to Largs via Garroch Head (approx. 20nm)

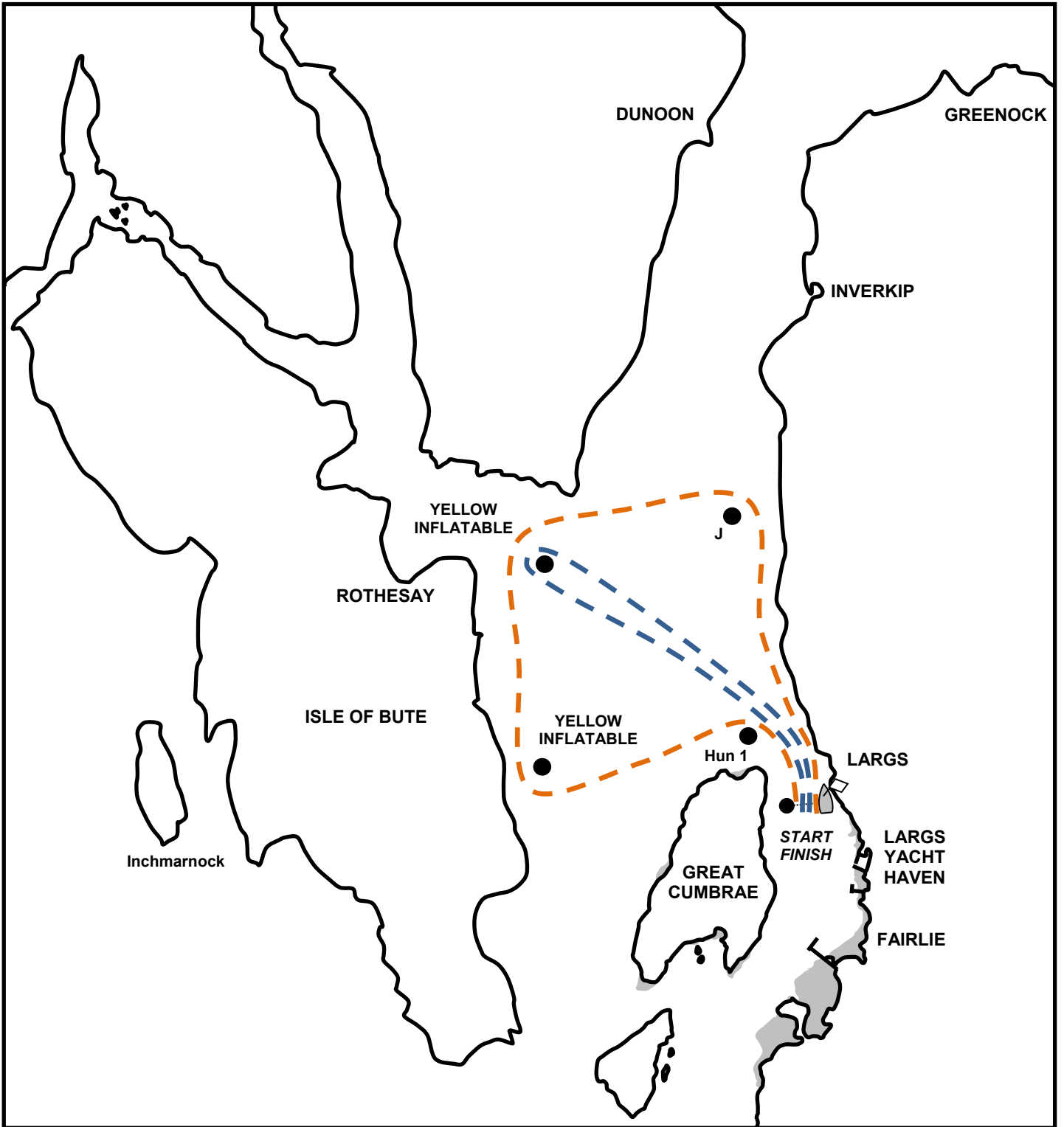
<i>Mark</i>	<i>Direction</i>
Start	Cross North to South
"Inchmarnock Island"	Pass to PORT
"Isle of Bute"	Pass to PORT
"No 38" South Cardinal Buoy	Pass to PORT
"Hun 9" Navigation Buoy (red)	Pass to PORT
Finish	Cross South to North

D3. THE FINISH

D3.1 The finishing line shall be between the mast displaying a blue flag on the committee vessel and a blue inflatable race mark.

D3.2 **SHORTENED COURSE:** The course may be shortened at any mark of the course in accordance with RRS 32.2 or, in addition, at an inflatable buoy (that is not necessarily a pre-defined mark of the course) laid specifically for shortening the course. In the event of a shortened course boats shall finish between a committee vessel displaying flag "S" and the adjacent mark.

Appendix E - THE KING'S COURSE



*Diagrams are not to scale and should not be used for navigation.
See Admiralty Chart SC2131 for more accurate information*

E1. THE START

- E1.1 The starting line will be between a staff displaying an orange flag on the committee vessel, anchored in Largs Bay to the North of Largs Pier and an orange inflatable mark.

E2. THE COURSE

- E2.1 **CLASS 1 and CLASS 2 only:** The first round of the “King’s Course” as sailed in 1891 (approx. 14.5nm)

Mark	Direction
Start	Cross South to North
“J” Navigation Buoy (red)	Pass to PORT
Yellow Inflatable Race Mark (approx. position 55°50.6N, 05°00.0W)	Pass to PORT
Yellow Inflatable Race Mark (approx. position 55°47.5N, 05°00.0W)	Pass to PORT
“Hun1” Navigation Buoy (yellow)	Pass to STARBOARD
Finish	Cross North to South

- E2.2 **CLASS 3 only:** The Second round of the “Kings Course” as sailed in 1891 (approx. 10 nm)

Mark	Direction
Start	Cross South to North
“Hun1” Navigation Buoy (yellow)	Pass to PORT
Yellow Inflatable Race Mark (approx. position 55°50.6N, 05°00.0W)	Pass to PORT
“Hun1” Navigation Buoy (yellow)	Pass to STARBOARD
Finish	Cross North to South

E3. THE FINISH

- E3.1 The finishing line shall be between the mast displaying a blue flag on the committee vessel and a blue inflatable race mark.
- E3.2 **SHORTENED COURSE:** The course may be shortened at any mark of the course in accordance with RRS 32.2 or, in addition, at an inflatable buoy (that is not necessarily a pre-defined mark of the course) laid specifically for shortening the course. In the event of a shortened course boats shall finish between a committee vessel displaying flag "S" and the adjacent mark.

Appendix F – List of Fixed Marks

<i>Mark</i>	<i>Approximate Position</i>
"C" Navigation Buoy (green)	55°48.1N, 04°55.2W
"Hun 1" Navigation Buoy (yellow)	55°48.1N, 04°54.2W
"Hun 3" Navigation Buoy (red)	55°47.6N, 04°53.5W
"Hun 9" Navigation Buoy (red)	55°44.7N, 04°54.4W
"J" Navigation Buoy (red)	55°51.5N, 04°54.7W
"L" Navigation Buoy (red)	55°52.4N, 04°54.6W
"No 13" Isolated Danger Beacon (black red black)	55°49.7N, 05°00.2W
"No 35" Navigation Buoy (green)	55°51.0N, 05°00.0W
"No 36" Navigation Buoy (red)	55°50.8N, 05°01.4W
"No 38" South Cardinal Buoy (yellow black)	55°44.4N, 04°57.1W
"No 47" Navigation Buoy (red)	55°49.4N, 05°11.7W
"O" Navigation Buoy (green)	55°54.5N, 04°54.5W